



VMInformer Professional

The market leading security assessment tool for virtual environments

Features and Benefits

- Assesses your virtual infrastructure in minutes
- Identifies key security risks
- Obtain immediate and detailed remediation guidance
- Full reporting for auditing and compliance requirements
- Graphical security dashboard of your virtual environment
- Out of the box policy templates based on industry security benchmarks
- Provides business meaning for your virtual machines
- Visual storage maps enable identification of potential data security issues

Technical Specifications

Target Platforms

- VMware ESX 3.x
- VMware ESX 4.x (vSphere)
- VMware ESXi 3.x and 4.x
- VMware VC 2.5

Client Requirements

- Windows XP, Vista, Windows 7, 2003 Server
- Dot NET 3.5 SP1

The explosive growth of virtualisation raises new challenges for securing virtual assets and data. VMInformer uniquely reports on the security disposition of virtualised environments and makes recommendations for remediation to your preferred policy standards.

Are you finding that your dynamic virtual environment is out of control and you have no visibility on the security of your infrastructure?

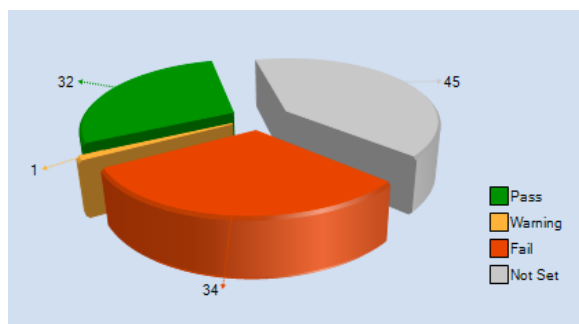
Take control of your virtual assets today by using VMInformer to assess, secure and maintain your virtual environment.

Organisations who use VMInformer in their virtual environment can easily demonstrate they are meeting their own security benchmarks as well as regulatory compliance initiatives.

VMInformer implements VMware's own security hardening guidelines as well as directives such as DISA STIG, CIS benchmarks and ISO 27005.

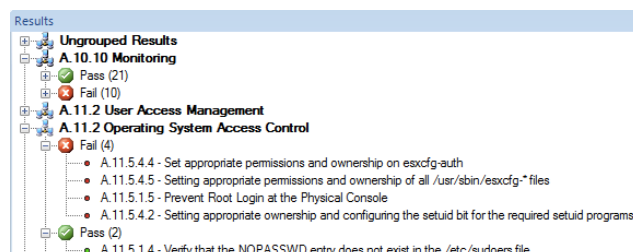
Graphical Dashboard

A graphical security dashboard provides a global view of your environment, and clearly highlights the overall security state of the virtual infrastructure.



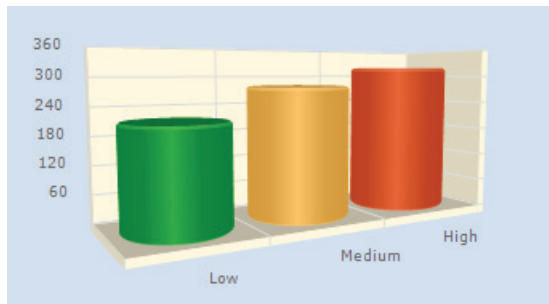
Policies

Policies can be fully customised to suit the requirements of your business. Policy rules can be grouped together enabling rapid identification of key areas of concern. VMInformer references standards such as ISO 27001 and CIS benchmarks.



Classification

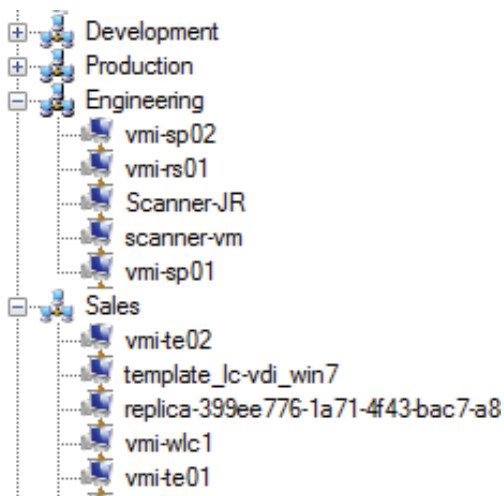
Each policy rule that is assessed against the virtual infrastructure is assigned a severity level, enabling organisations to quickly classify risk levels and respond.



Business Assets

Standard virtual management tools do not provide a business centric view. Using VMInformer virtual machines can be asset tagged according to their importance or function within the business.

Virtual Machines are your business assets, they are core to what you do and are a vital part of the day to day activities of your organisation.



Reporting

Assessment information can be extracted for remediation. Management summary information and report filtering enables you to provide clear, concise information for your IT governance officers and auditors.

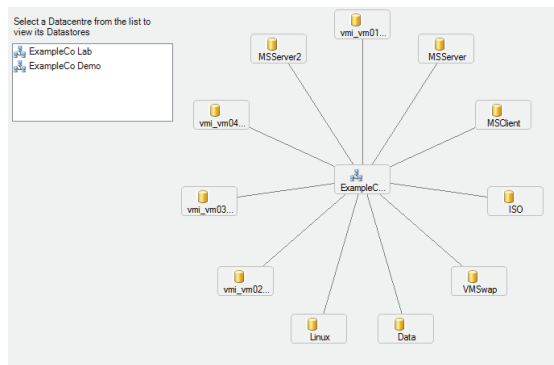
Remediation

Each policy exception is clearly detailed. Step by step remediation guidance is provided which enables you to fix the issues with minimal downtime.

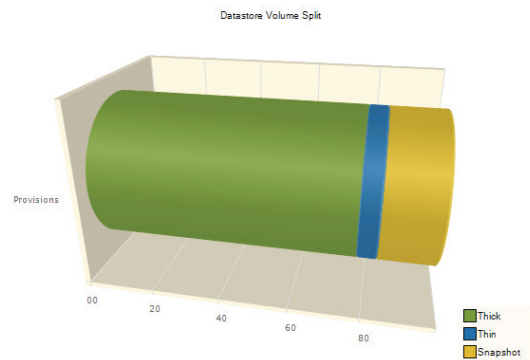
Rule Name:	Disable copy and paste operations between guest os and remote console								
Description:	It is possible in a default configuration to copy and paste data between the Guest VM and Remote Console. This could potentially open a security risk in allowing sensitive data to pass from the guest to an external host. If this behaviour is not required then it should be turned off.								
Entity:	<table border="0"> <tr> <td>isolation tools copy.disable</td> <td>Recommended Values:</td> </tr> <tr> <td>isolation tools paste.disable</td> <td>Disable Copy: TRUE</td> </tr> <tr> <td>isolation tools setGUIOptions.enable</td> <td>Disable Paste: TRUE</td> </tr> <tr> <td></td> <td>GUI Options: FALSE</td> </tr> </table>	isolation tools copy.disable	Recommended Values:	isolation tools paste.disable	Disable Copy: TRUE	isolation tools setGUIOptions.enable	Disable Paste: TRUE		GUI Options: FALSE
isolation tools copy.disable	Recommended Values:								
isolation tools paste.disable	Disable Copy: TRUE								
isolation tools setGUIOptions.enable	Disable Paste: TRUE								
	GUI Options: FALSE								
Risk Level:	High								
Remediation:	<ol style="list-style-type: none"> 1. Login to the VC or ESX Host using the VI client 2. Select the specific VM you want to change the setting for 3. Edit the Machine settings 4. Select options then advanced 5. Then select general and then click the button configuration parameters 6. Enter the entity information and value as specified above 								

Visual Storage Maps

VMInformer provides you with a visual map of where your virtual machines are stored.



Storage volumes can be inspected to identify potential data leakage or data loss issues. A breakdown of virtual machine types enables you to see how many snapshots, thin and thick provisioned machines you have per storage volume.



Computer Communications Ltd,
9 Mount Temple,
ROMSEY,
Hampshire SO51 5UW
Tel: 0844 873 2668
Email: sales@ccl.co.uk
Web: www.ccl.co.uk